

Local Government Reorganisation update

05.03.2026

This evening's panel



Chair

Cllr Richard Stanley

Leader

Tewkesbury Borough Council



Kathy O'Leary

CEO

Stroud District
Council



Rob Ayliffe

Director of Policy,
Performance &
Governance /
Monitoring Officer
Gloucestershire
County Council



Siobhan Farmer

Director of
Public Health
Gloucestershire
County Council

AGENDA

What this update will cover?

1. Welcome, introductions and housekeeping

What's happened recently, what now, and what's next?

- 2.**
- A. What's happened since November?
 - B. Recap on the proposals
 - C. What's happening now and what happens next?

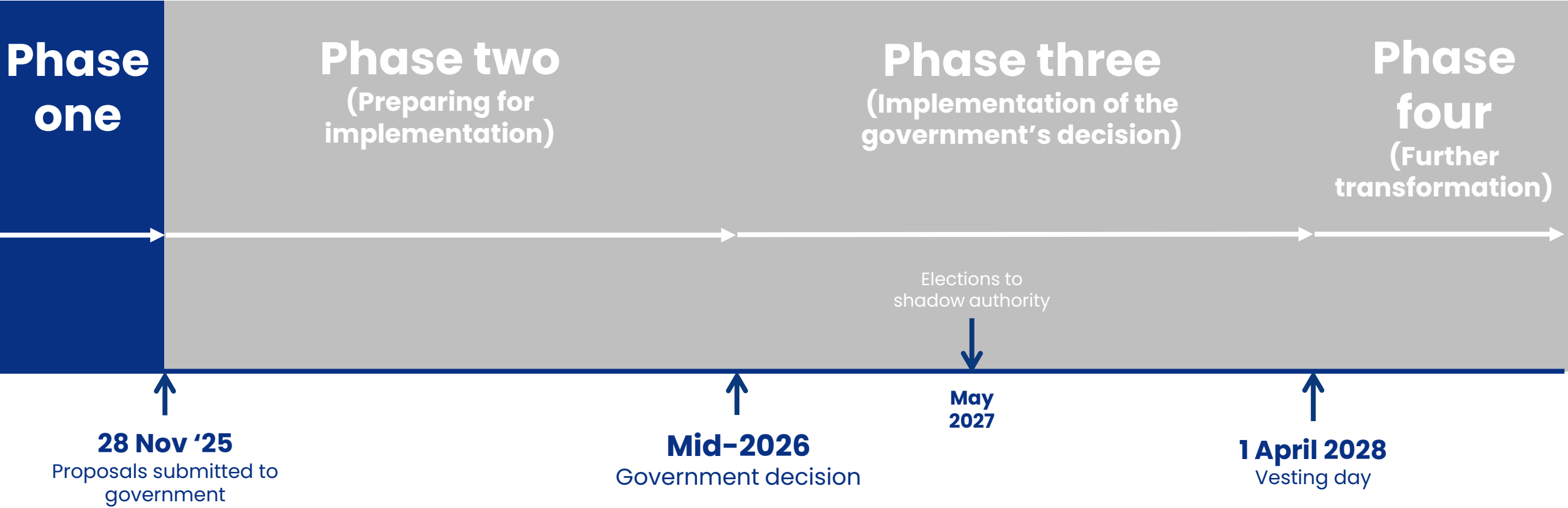
3. The government's consultation

4. An update on neighbourhoods and communities

5. Q & A session

1 | Recap on what's happened, what now,
what's next

What's happened?



The proposals



Two unitary authorities

One covering the east

One covering the west



Two unitary authorities

One covering a slightly
expanded Gloucester City

One covering the rest of
Gloucestershire



One unitary authority

Covering the entire county

The proposals – which council backed what?

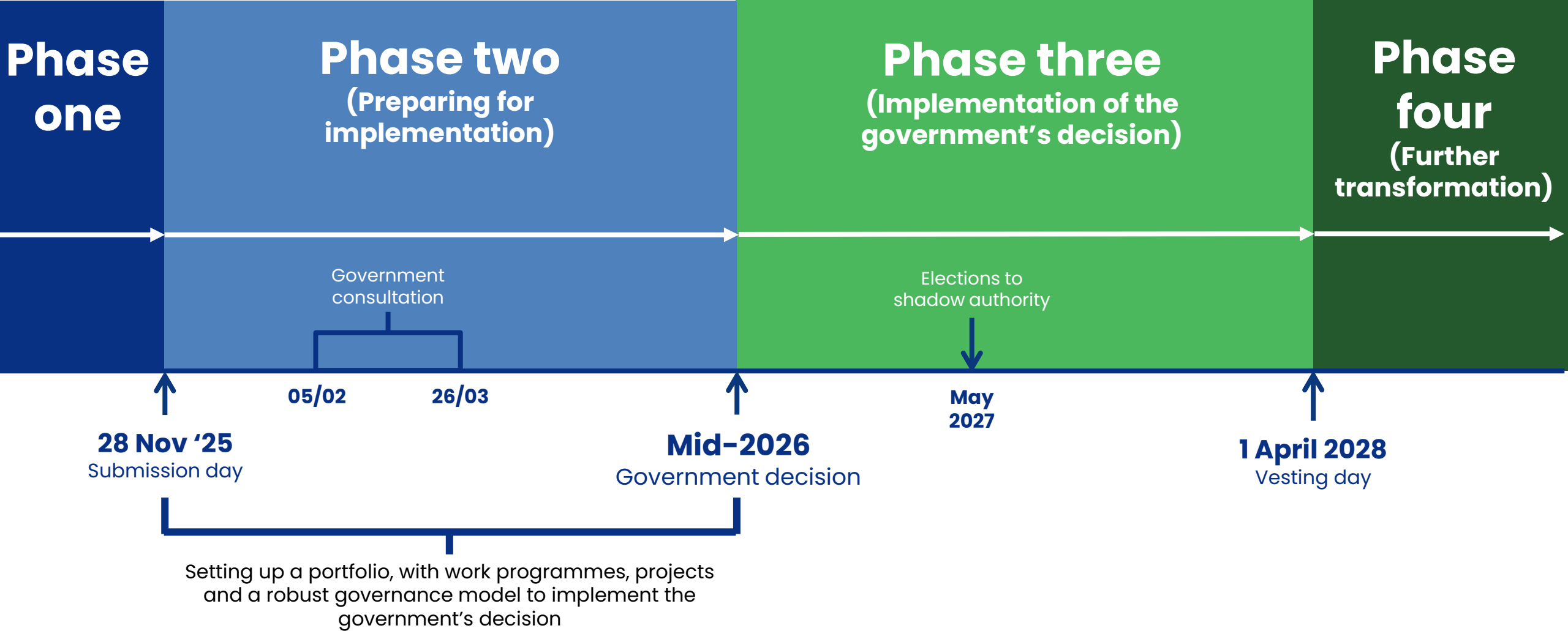


Future →
Gloucestershire



Forest of Dean District Council was not supportive of any of the proposals submitted

What's happening now, and what next?



2 | The government's consultation

Government's LGR consultation

Key points

- Government running consultation
- **Closes on March 26th**
- Consulting on **all three options**
- Asks to what extent consultees believe **proposals meet criteria**
- Government reached out to its own list of "named consultees"

What's our role?

- To **work with communities to amplify** the consultation
- Remain **neutral** around options and engage in accordance with publicity code
- Produced a **pack of materials** to help towns and parishes promote the survey with residents

Have your say



Read more about
the proposals



Complete the
consultation



Access resources
to help promote
the consultation
with stakeholders
that you have a
relationship with

3 | Neighbourhoods & communities

Recap of proposals (what we have said so far)

6. Local engagement and empowerment This criterion assesses whether the model can support stronger local democracy and provide practical tools for neighbourhood-level decision-making.	A) Enables stronger community engagement	8. Civic engagement and participative democracy This criterion assesses whether the model provides meaningful democratic representation at community level.	A) Promotes civic engagement and strengthens participative democracy
	B) Delivers genuine opportunities for neighbourhood empowerment		

What we said...

- Ensure we will meet the government criteria
- Build on existing good practice across the county
- Value communities of geography, identity and interest
- Seeing Town & Parish councils and VCSFE sector as key partners
- Emphasising participation, empowerment and trust
- Starting point of neighbourhoods of 20,000 to 50,000
- Shaping neighbourhood boundaries by "thorough consultation" including experience and views of councillors.

Key elements of the Neighbourhoods & Communities Programme

Below project areas indicative – still being developed

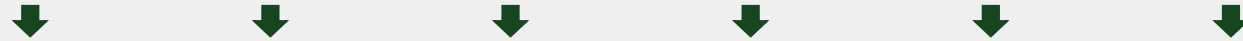
Natural Communities	What might our neighbourhood areas be?	Staffing	Who currently does what across the seven councils?
Statutory Partners	How will we align with key statutory partners like Health?	Neighbourhood Governance	How can neighbourhoods be governed and operate in practice?
Funding	What are the seven councils currently spend with the VCFSE, and how neighbourhoods will be resourced?	VCFSE	What issues and opportunities do we want to address through reorganisation?
Service Offer	How might unitary council services align with neighbourhoods?	Towns and Parishes	How can we use reorganisation to develop and/or improve the local council offer?
Digital and Data	What is the opportunity for neighbourhoods and communities in better use of digital and data/insight?		

LGR implementation portfolio structure

LGR Implementation Portfolio

Portfolio and Programme Management Office (PPM Office)

Development of the Future Operating Model (FOM) incl. design principles e.g. climate change
*All programmes connecting into a single coherent blueprint co-ordinated by a **Design Authority***



Comms, Engagement & Branding

Governance & Legal

Finance

Digital & Customer Experience

Data & Insight

Technology

People & Culture

Neighbourhoods & Communities

Property & Assets

Procurement, Contracts & Commercials

Devolution (*Likely to NOT be mobilised immediately*)

Service Transition Activity (structure tbc)

4 | Question & answer session

Next steps

**Take part in the
consultation!**



**More engagement
with you to follow in
the coming months**

Next big milestone:
Government's
decision on proposals
– expected in the
Summer

Future→
Gloucestershire

5 | Close